



**8Th Frasassi Climbing Festival 1/4 Settembre 2022**



## **Frasassi Challenge 2022**

### **Regulation**

**The Frasassi Challenge is a climbing marathon divided into three categories based on difficulty: Easy Medium and Hard**

**The challenge includes the awarding of the first man and the first woman classified for each category among those who will have obtained the highest score by climbing in the crags included in the Challenge in Rotpunkt mode.**

**In order to access the competition areas, climbers must have the following devices:**

- 1. Approved climbing helmet**
- 2. Approved harness for climbing**
- 3. Approved quickdraws for climbing**
- 4. Device for the insurance of the leader of the consortium**
- 5. Homologated whole rope with a minimum length of 70 meters**

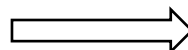
### **Opening of the event**

**The challenge will start on the morning of September 2nd at 8 am and will end on Sunday September 4th at 12 noon.**

**From 14.00 on Thursday 1 September, registration will be open at the info point where once registered, the Vertical Life unlock code can be collected.**

**All athletes must complete the responsibility form and submit the self-certification.**

**The awards ceremony will take place on the afternoon of Sunday 4 September, the prizes awarded must be collected personally**





# 8Th Frasassi Climbing Festival 1/4 Settembre 2022



## Categorie e Punteggio

### Category "Easy" > Fino al 5C

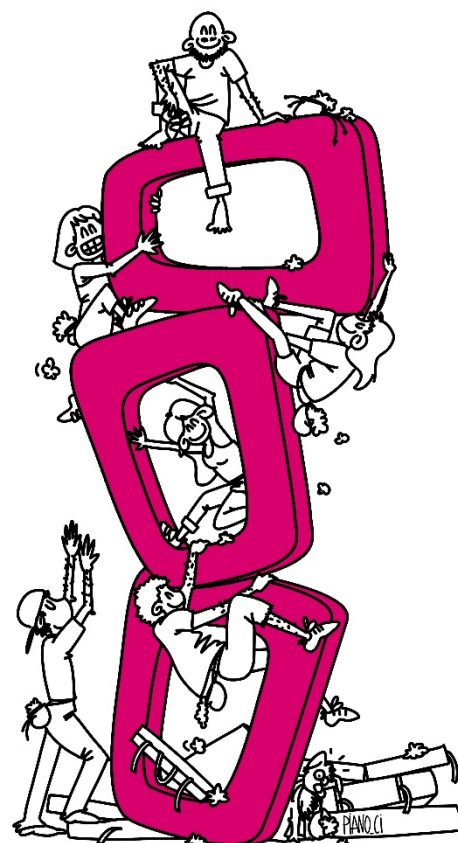
- CRAGS**
- | Colle Tordina
  - | Sbarra
  - | Chez Maxime
  - | Falcioni
  - | Latifondo

### Category "Medium" > dal 6a al 6c+

- CRAGS**
- | Altro Mondo
  - | Sulfuria
  - | Falcioni
  - | Cagliostro
  - | Tempietto
  - | Gorgovivo

### Category "Hard" > dal 7a al 8a

- CRAGS**
- | Sulfuria
  - | Val Giubola
  - | The River
  - | Moai
  - | Lamento



### Calculation of scores

|            |           |            |           |            |           |            |           |
|------------|-----------|------------|-----------|------------|-----------|------------|-----------|
| <b>5a</b>  | <b>5b</b> | <b>5c</b>  | <b>6a</b> | <b>6a+</b> | <b>6b</b> | <b>6b+</b> | <b>6c</b> |
| 1 pts      | 2 pts     | 4 pts      | 6 pts     | 10 pts     | 14 pts    | 20 pts     | 28 pts    |
|            |           |            |           |            |           |            |           |
| <b>6c+</b> | <b>7a</b> | <b>7a+</b> | <b>7b</b> | <b>7b+</b> | <b>7c</b> | <b>7c+</b> | <b>8a</b> |
| 40 pts     | 70 pts    | 100 pts    | 150 pts   | 280 pts    | 380 pts   | 500 pts    | 700 pts   |

